

**Boardwalk**

# Sherwell Road

## BRISLINGTON

APPROXIMATE FLOOR AREA  
83.7 SQM / 901 SQFT

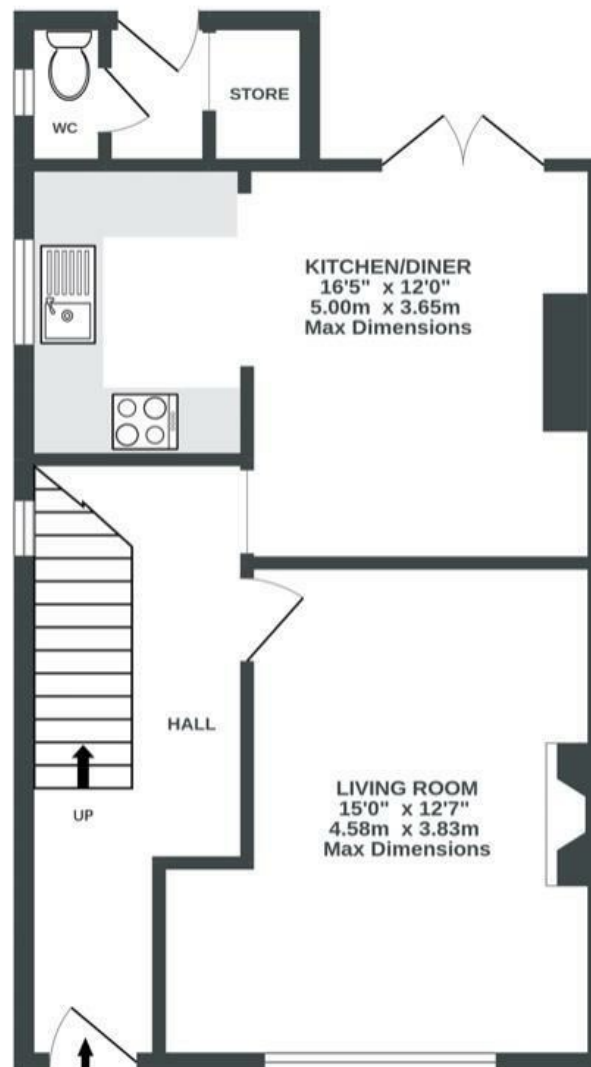
### BOOK A VIEWING

01179 898 222

hello@boardwalkpropertyco.com



GROUND FLOOR  
467 sq.ft. (43.4 sq.m.) approx.



1ST FLOOR  
433 sq.ft. (40.3 sq.m.) approx.



Illustrations are for reference purposes only, measurements are approximate, not to scale.

**Boardwalk**

# Sherwell Road , BRISTOL



£385,000



BS4 4JX



3 Bedrooms



2 Bathrooms

*"When I first walked into the house I knew that there was lots of potential to create a beautiful new space, which feels cosy and I can call home. It took me four months to renovate and it was so worth it, especially when I discovered the beautiful old floorboards - I'm a huge fan!"*

*I absolutely love living in Brislington, especially with my dog Alfie. Having Nightingale and Victory Park on my doorstep has been a game changer. Not only that I didn't have to drive every day to take him for a walk, Nightingale in general is such a beautiful woodland with a little stream, perfect for a morning run or mid afternoon stroll. Brislington is a great and safe area to live in with a lovely neighbourhood, brilliant schools and access to Bristol's city centre."*

